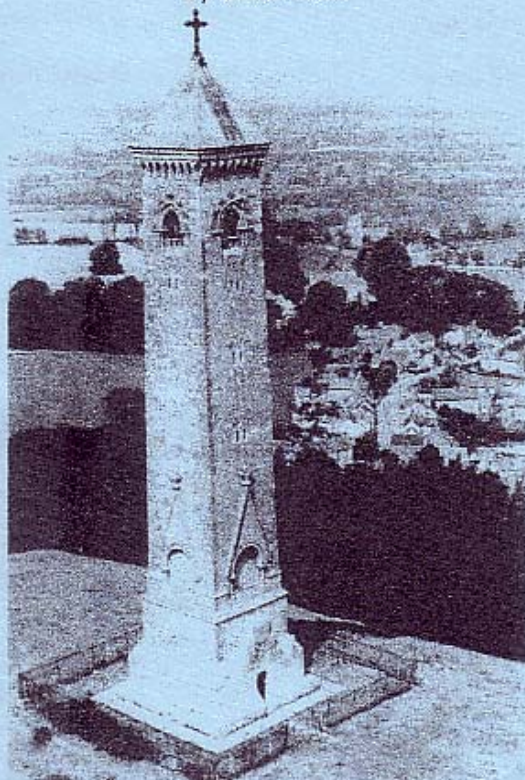


A Transcription of the 1841 Census
for North Nibley, Gloucestershire,
with index.

By Susan Ross



Price £4

Contents

Enumeration District 13	Page 2
Enumeration District 14	Page 14
Enumeration District 15	Page 30
Index	Page 43
Notes	Page 47

Notes

This booklet is a copy of the 1841 Census Enumerators' Books for North Nibley, taken in the June of that year. The enumerators had to collect and transcribe census forms left with all the householders in their area. They probably also had to help many of the householders fill in their forms, given the low levels of literacy at the time. This is the first time that all the individuals in the Parish were listed and it is a rich source of information for researchers. Three censuses were taken before this, in 1801, 1811, 1821, and 1831, but only the summarised information taken from them is available. This is printed in the table below.

	Inhabited Houses	Number of Families	Uninhabited Houses	Population
1800	225	230	3	1211
1821	294	307	12	1553
1831	286	295	40	1562
1841	259		48	1305

Notes on the Text:

- A horizontal line indicates a resident not part of the immediate family group e.g. servant, lodger etc.
- On the original form, there was a column headed 'Born in Scotland, Ireland, or Foreign Parts'. As this applied to only a tiny minority of those listed, I have not printed this as a separate column. Instead, where a 'Y' was entered into this column, I have put an 'I' in the 'Born in Gloucestershire' column, and where an 'S' was entered (presumably because they were born in Scotland) I entered an 'S' in the same column.
- The numbers in the left hand column are a cross reference to the Tithe Apportionment Map for North Nibley, which was drawn up in 1847. It was sometimes possible to work out which houses some of the families listed on the census lived in, by comparing the CEB's with the listing which accompanied the Tithe Map. Sections of the map covering the more densely populated parts of Nibley have been reproduced in this booklet, with the kind permission of Mr Geoff Gwatkin, who has copied the Tithe Maps of Gloucestershire. He may be contacted at 92, Verschoyle Gardens, Ross on Wye, HR9 7HQ, phone number 01989 565852, if you wish to buy a copy of the map for the whole Parish.